



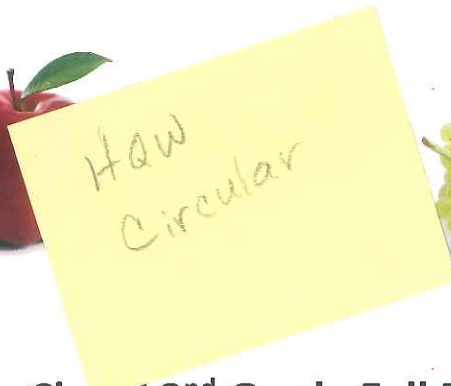
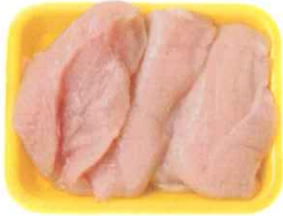


Resources and Choices Checklist  
Fall Expedition 2018

	Yes, I have all of this	I have some of this	No, I need to work on this
<b>Presentation</b> <ul style="list-style-type: none"><li>• Neatness</li><li>• Colorful</li><li>• Pictures</li></ul>			
<b>Content</b> <ul style="list-style-type: none"><li>• Product Names</li><li>• Accurate Prices</li><li>• Labels of Stores</li><li>• Best Price</li></ul>			
<b>Reflection</b> <ul style="list-style-type: none"><li>• Conclusions</li><li>• Synthesis</li><li>• Major Understandings</li></ul>			

# 3<sup>rd</sup> Grade Families' Food Choice Circular



By: Mrs. Taren's Class/ 2<sup>nd</sup> Grade Fall Expedition: Resources and Choices.

Source: 3<sup>rd</sup> Grade Families' Survey

# Dairy

## Milk

Safeway \$4.59/gal	Harris Teeter \$2.49/gal
Mega Mart \$3.99/gal	Trader Joe's \$2.89/gal



Harris Teeter

## Cheese

Safeway \$6.99	Harris Teeter \$4.99 <small>20 slices</small>
Mega Mart \$6.99	Trader Joe's \$3.99 <small>organic 12 slices</small>



Harris Teeter

## Yogurt

Safeway <small>12 pack</small> \$5.99 <small>Danimals</small>	Harris Teeter \$5.59
Mega Mart \$5.49 <small>Danimals</small>	Trader Joe's \$2.99 <small>6 pack cup organic</small>



Traders Joe's

# Grains

## Bread

Safeway \$ 3.99	Harris Teeter \$ 4.29
Mega Mart \$ 3.69	Trader Joe's \$ 2.49



Trader Joe's

## Rice

Safeway \$ 2.99	Harris Teeter \$ 0.99
Mega Mart \$ 4.99	Trader Joe's Honey Nut O's \$ 2.99 3 lb bag



Harris Teeter

## Cereal

Safeway \$ 3.99	Harris Teeter \$ 3.99
Mega Mart \$ 3.99	Trader Joe's \$ 2.29

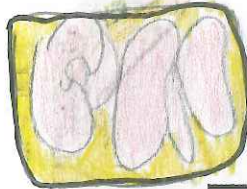


Harris Teeter

# Protein

## Chicken

Safeway \$4.99/lb	Harris Teeter \$2.99/lb
Mega Mart \$2.64/lb	Trader Joe's \$4.32/lb



Mega Mart

## Beef

Safeway \$5.00	Harris Teeter \$5.99/lb
Mega Mart \$4.76/lb	Trader Joe's \$2.99/lb



Mega Mart

## Eggs

Safeway \$2.29	Harris Teeter \$1.29
Mega Mart \$1.99 for dozen	Trader Joe's \$2.99



Harris Teeter

# Fruits

---

## Apples

Safeway \$ 1.49/lb	Harris Teeter \$ 1.33/lb
Mega Mart \$ 1.49/lb	Trader Joe's \$ 2.99/bag



Harris Teeter

## Bananas

Safeway 28¢ each	Harris Teeter 30¢ each
Mega Mart 32¢ each	Trader Joe's 19¢ each



Trader Joe's

## Grapes

Safeway \$ 2.86/lb	Harris Teeter \$ 1.99/lb
Mega Mart \$ 2.49/lb	Trader Joe's \$ 2.49

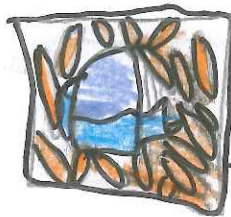


Harris Teeter

# Vegetables

## Carrots

Safeway \$1.99 mini	Harris Teeter \$1.69
Mega Mart \$1.29 mini	Trader Joe's \$1.49 shredded



Mega Mart

## Broccoli

Safeway \$2.89	Harris Teeter \$1.99/lb
Mega Mart \$1.49/lb	Trader Joe's \$2.99 Bunch



Harris Teeter

## Potatoes

Safeway \$4.59	Harris Teeter \$3.99
Mega Mart \$1.49/lb	Trader Joe's \$1.99 russet



Trader Joe's

- Price can affect what we choose to buy.
- You must think about your culture and nutrition when making economic choices.
- But cultural and nutritional (organic) goods could cost more. some consumers are willing to pay more for these goods.
- Some consumers prefer price to location so they will travel far for cheaper prices.
- Some consumers prefer location to price and are willing to pay more because its closer.
- Protein as a food group is the most expensive.
- Vegetables and grains are the least expensive.
- There are lots of capital resources in a big grocery store.
- Grocery stores have shipments of goods every day.